

Family Hub Artwork Brief

1. Introduction

What: A new public artwork on the windows of Central Sutton Library to introduce and welcome children, young people and parents to a new family support space within the library.

Where: Sutton central library - St Nicholas Way, SM1 1EA

Who: Individual artists with relevant experience in developing community art projects

Fee: £3,000 (This is the fee for the artwork, print & installation will be covered by The London Borough of Sutton).

Deadline for proposals: 2nd November 2022

Deadline for completion: 30th November 2022

1.1. Background:

We are creating a family hub space in Sutton Central Library, for families to access help and support in a safe, warm and welcoming environment. This designated space will be on the ground floor of the Sutton Central Library. We expect parents/carers, and children from birth to 18 years old to access this space.

We would like families to be part of designing elements of this space and making it feel like an area that is welcome for them to join.

Family hubs are for families who need some support; whether that is peer support, parenting, debt, practical help with form filling, employment, school placements, mental health and/or health checks and therapy.

We would like some artwork on windows that is co-produced with a cohort of children and parents/carers. (The Family Hub team will support in identifying families to be part of this work with you). The windows look out onto the high street in Sutton and are very visible to the public, so it is in the main focal point to welcome and engage people into the Family Hub.

Part of the artwork on the windows needs to be printed on a board within the library space. The wording 'Family Hub' needs to be present somewhere on the design.

2. Requirements:

2.1. Scope:

We are looking for a concept design proposal for a co-curated artwork to go on the windows of the new Family Hub area of Sutton Central Library (illustrated in the images below.) Proposals need to include how the artwork will be informed by children and parents/carers, i.e. the engagement method needed to co-curate the work.

Proposals should consider:

- Theme: the feeling of the design needs to be welcoming, hopeful, personal/relatable, and real (e.g. not too glossy, showing the realities of life)
- Style: the artwork design needs to be something children would find interesting, as well as adults. Consideration into the diversity of the borough.
- Content: It needs to include the words 'Family Hub'.
- Engagement: ideally a minimum of 3 x local primary schools, will be engaged with the co-creation of the artwork,, plus respective parents/carers of participating children. NB Assistance with facilitating this engagement will be provided by the commissioner.

2.2. Technical Specification

A - Window print:



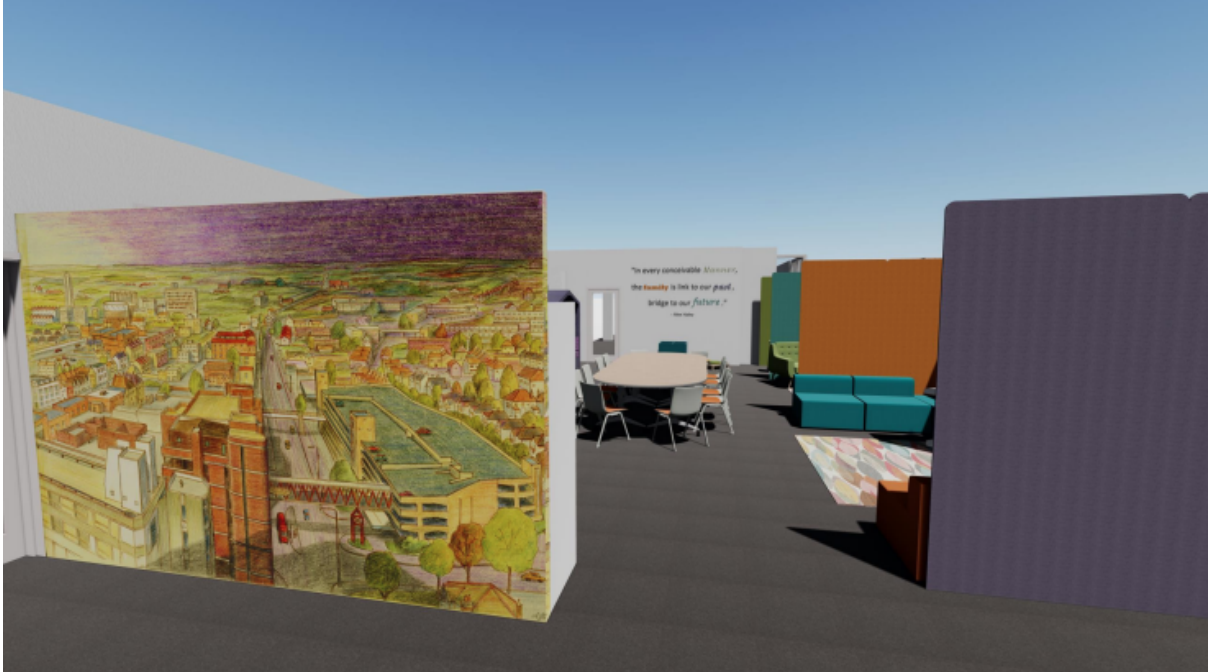
The bottom row of windows as shown in the photos (only ones on red line) above are the ones that will have the artwork on.

Dimensions - Width: 10m 74cm, Height 1m 94cm

Resolution - 300dpi

B - Wall print:

This will be printed on the back of shelving units, and used as an entrance wall inside the library, as indicated by an example photo below:



Dimensions:

117cm tall, 360cm wide

Please note this print will be taken from the window design, however we are looking for your ideas as to which part it should be.

2.3. How to apply

Please send in a one page document that outlines your design proposal, that includes:

- Your design concept that outlines how you will answer the brief for the artwork
- Sketch mockups or visuals where possible to explain your concept idea which can be attached or embedded into a document.
- An outline of your planned approach to working with children and parents/carers to inform the design
- Details of your knowledge of, or connection to, the London Borough of Sutton and its diverse communities
- A CV and links to your work online on a website, in articles or Instagram, with reference where possible to projects, commissions or elements of your practice that have the most relevance to this commission. If you would prefer not to share online links please provide a PDF document with visual examples of your work - PDF no more than 10mb
- An outline of your timescales to work to the deadline of 30 November 2022

Please send your proposal to Lorna.Jacques@sutton.gov.uk